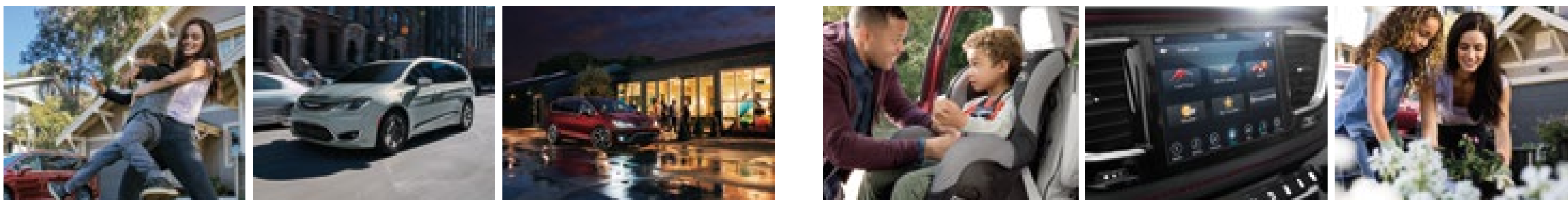
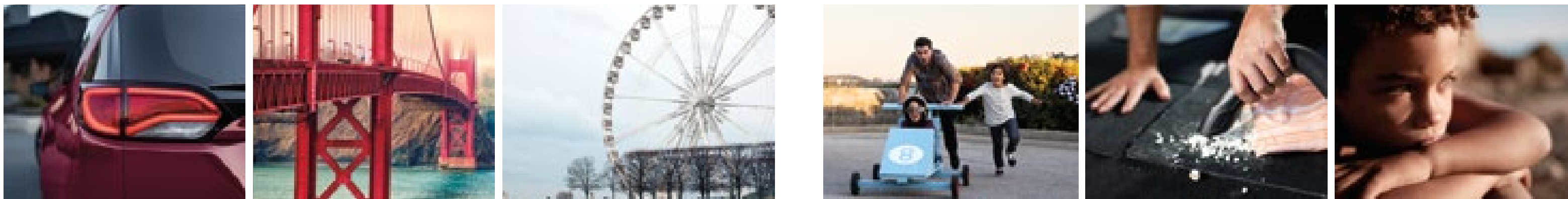




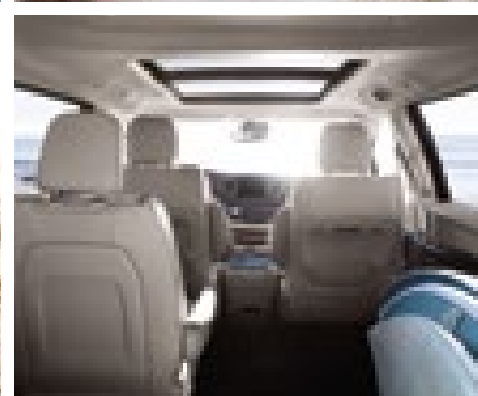
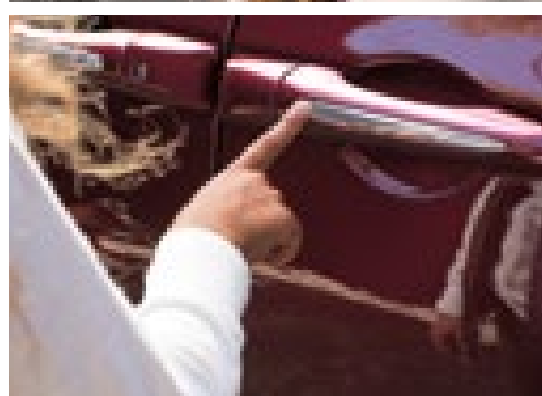
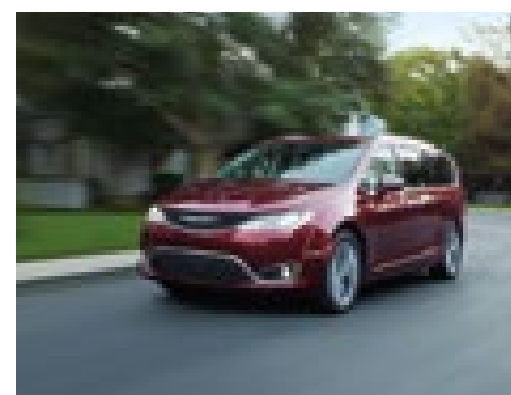
IMPORTED FROM DETROIT®



The all-new 2017 **Chrysler Pacifica**



There are no typical days for the modern family, only equally chaotic. The all-new Chrysler Pacifica is up to the multitask and what happens between the schedule lines — moments that aren't planned. They remind us of what it's like to be a kid again. Introducing 37 segment-first^{1*} features invented to calm the storm of busy lives, together.



*A note about this brochure: all disclaimers and disclosures can be found on the inside back cover.



Curb appeal.



Generation us.

What's yours is theirs, and Pacifica stands for family pride as much as your home, while it raises the neighborhood bar. This all-new ultimate family vehicle displays a sleek, athletic stance with a sculpted body. Features like LED lighting, available chrome accents and 20-inch wheels highlight the sharp style to the new silhouette.



Engineered for strength.

The all-new Pacifica architecture is built from the ground up, starting with strategically placed dual-phase, high-strength, lightweight steel, resulting in a strong safety cage that contributes to impact protection.

The all-new Pacifica is the quietest vehicle in its class.²



Noise, vibration and harshness (NVH) take a backseat to a smooth and quiet ride.

The sculpted shape offers advanced aerodynamics, while the enhanced low-sound exhaust and motor volumes, laminated glass, Active Noise Cancellation (ANC) and triple-seal doors contribute to what makes Pacifica the quietest vehicle in its class.²



Utility gets a new platform.

The all-new architecture and independent rear suspension optimize ride and handling with a front suspension cradle configured for strength, stiffness and redefined driving dynamics. The low rolling-resistance tires are a key component to unsurpassed highway fuel efficiency in its class,³ while stiffer wheel designs reduce NVH factors.

*Based on latest available competitive information and manufacturer's estimated 18 city / 28 hwy mpg with 3.6L engine and nine-speed transmission.

efficiency 10



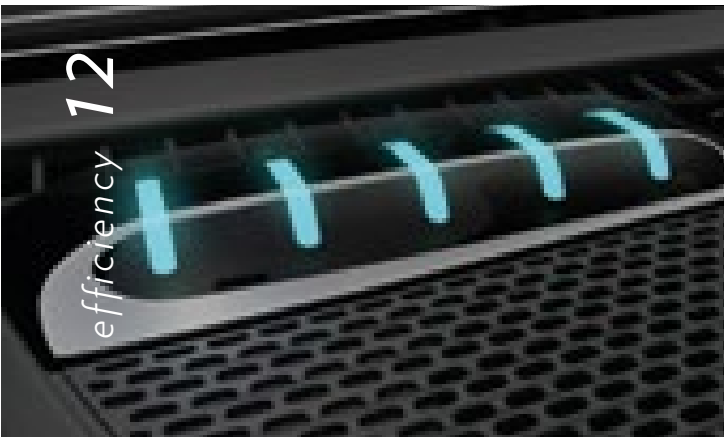
Serene attention and respect.

The Hybrid powertrain provides highly efficient delivery of intuitive power and range. Modern exterior features include LED lighting, chrome accents, unique Silver Teal body color, as well as signature Teal badging accents, grille design and wheels exclusive to the Pacifica Hybrid. Bringing the outside in, Anodized Ice Cave interior accent finishes and Ice Blue stitching give a soothing sense of cabin serenity.

First-ever
Hybrid in its class¹
with 80 MPGe*



*Based on manufacturer's testing. Actual mileage may vary.



Day-tripping on a single charge.

Whether you're driving in the city or on the highway, the smart Pacifica Hybrid technology seamlessly transfers between gas and electric power based on how you're driving at that moment. It's about providing maximum efficiency and capability to cover lower-range daily driving, such as errands and carpooling, all within a single charge. A convenient five-point charging indicator on the instrument panel is visible from outside the vehicle to easily identify the battery's charge level.



80 MPGe* / 30* electric miles for 530*-mile combined range.

Look to the Hybrid technology for outstanding fuel economy of 80 MPGe*, a 30-mile electric range*, and a total driving range of 530 miles* with V6 powertrain and charge. The Hybrid model may be plugged in and electrically charged, as well as through regenerative braking by the gasoline engine.



Smart app.

The Hybrid-exclusive Uconnect® app lets you get your vehicle information remotely, so you can always be prepared and plan your charging schedule accordingly.



Hybrid screens.
Uconnect offers Hybrid Electric Pages on the Driver Information Display (DID), providing customizable efficiency and power-usage details.



Two-hour charge.†
The Pacifica Hybrid enables recharging of the battery via a standard 120v outlet or charge in as little as two hours† with an available 240v charging system.



*Based on manufacturer's testing. Actual mileage may vary.
†Requires purchase and professional installation. See Chrysler dealer for details.



Unsurpassed highway fuel economy in its class.³

18 MPG city / 28 MPG highway.*

When you choose the Pacifica, you get a powerful yet economic powertrain with a standard 3.6L Pentastar® Variable Valve Timing (VVT) V6 engine with 9-speed automatic transmission that delivers an impressive best-in-class¹ 287 horsepower and 262 lb-ft of torque.

*Based on manufacturer's testing. Actual mileage may vary.

9-speed transmission.

The all-new Pacifica is the only vehicle in its segment¹ to be equipped with the pioneering mechanics of a standard 9-speed automatic transmission — a primary contributor to fuel efficiency and driving dynamics.

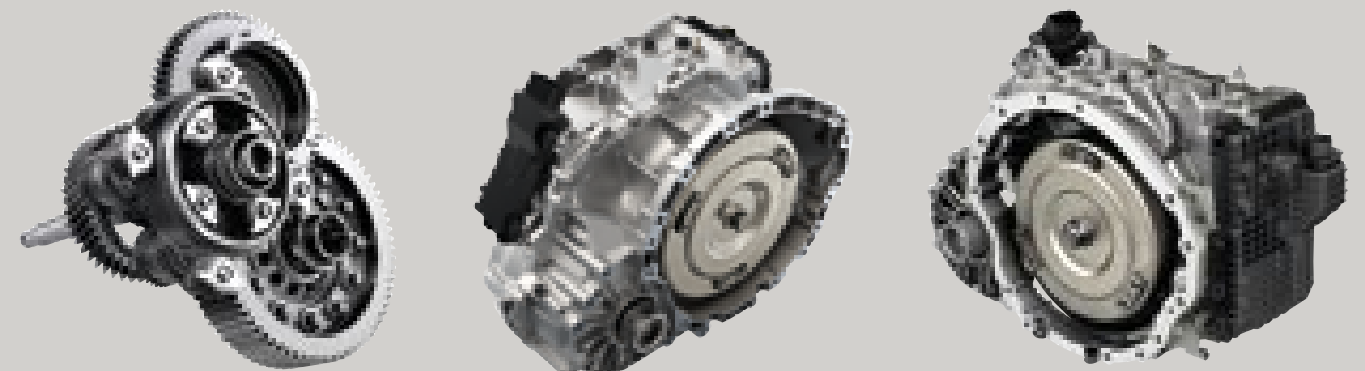


Image courtesy of ZF Friedrichshafen AG.

Wide open space.

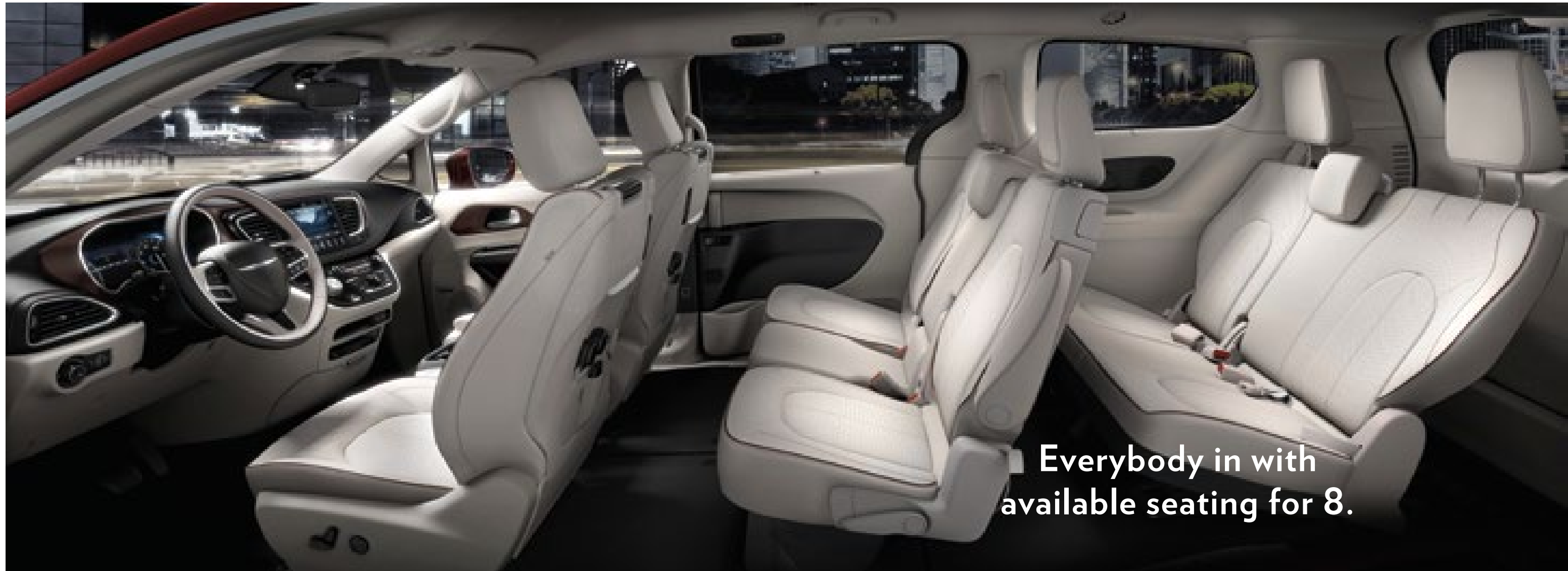
Making room for more is rarely a hurdle with the all-new Pacifica's interior spaciousness, including best-in-class¹ cargo volume and second* and third-row seats that fold down into bins in the floor. Occupants in all three rows will notice the abundant leg room, shoulder room and head room for a relaxing, comfortable ride.

*Non-hybrid models.





Interior 18



Everybody in with available seating for 8.

The spacious family room on the go.

The available new seating for eight* includes an easily removable⁴ center seat in the second row, adding an armrest, cup holder and bin when the seatback is folded down. The eighth seat also increases the capacity of LATCH-installed child seats to five. This lightweight seat can be easily removed when additional cargo space is needed.

*Non-hybrid models.

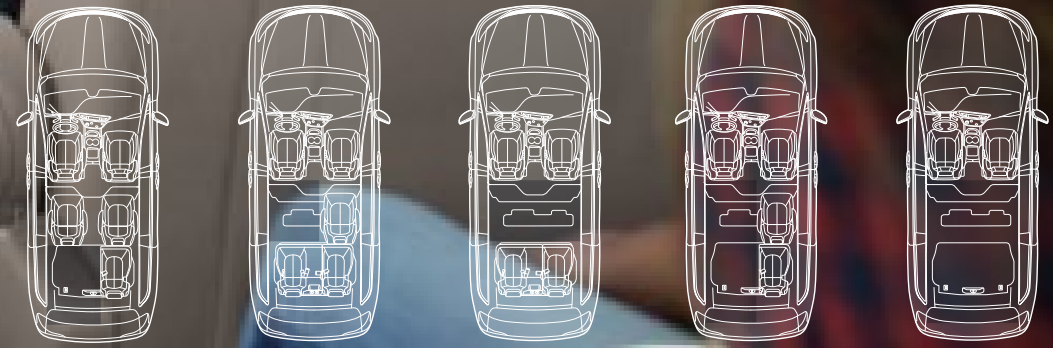


Formation finding.

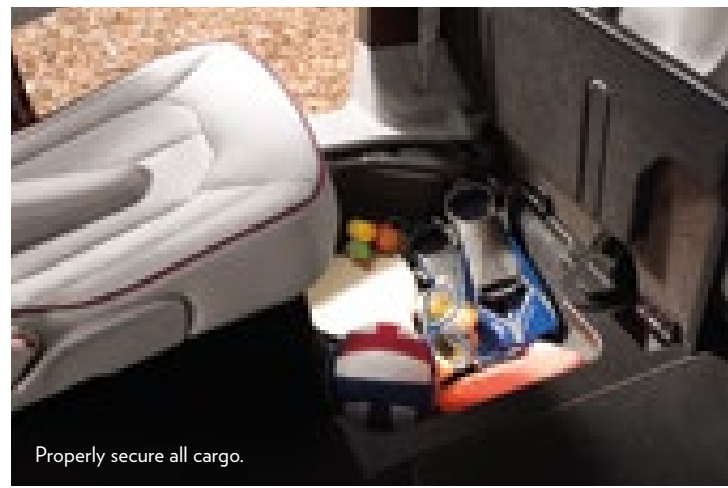
Appreciate the awe-inspiring view while enjoying cloud formations and imagining distant galaxies. The spacious Pacifica interior is visually expanded with the segment-first¹ available Tri-Pane Panoramic Sunroof with power dual-pane, first- and second-row sunroof with third-row fixed overhead glass. The deep-tint glass and available sunshades give a moment of relaxation at any time of the day.



Class-exclusive⁵ Stow 'n Go[®] seating and storage — no heavy lifting or seat removal⁴ required.



Properly secure all cargo.



Properly secure all cargo.

With 243 different seating configurations, versatility goes further.

The all-new family room on wheels offers 243 different seating configurations with the available seating for eight. With seats stowed in the floor, an expansive flat cargo space will hold a large stack of 4' x 8' sheets of construction material. When seats are in the upright position, in-floor bins provide storage and gear organization.

The only minivan in its class⁵ with Stow 'n Go seating, storage and cargo system.

Designed to be used without having to remove⁴ the seats, the Stow 'n Go seating and storage system is the key to smooth transitions. With the new Stow 'n Go Assist feature, stowing gear or the seats in the second-row bins is as simple as pressing a button to slide the front seats forward, allowing easy access to the in-floor bin.





EasyTilt third-row access.

Passengers can easily climb in and out of the third row using the class-exclusive,¹ second-row Easy Tilt seat feature. At the simple pull of a lever, the second-row seat shifts forward, even with an unoccupied installed child seat in place.



No-fumble entrance made easy.

With the available hands-free* liftgate and sliding side doors, a simple wave of a foot opens up the vehicle while the key fob is on or near you. Whether you're carrying shopping bags or a sleeping baby, getting settled has never been smoother.

*Late availability.



Properly secure all cargo.



Quick cleanup.

Properly secure all cargo.



Do-it-themselves with the available Stow 'n Vac integrated vacuum.

When things get messy, the convenience of an available lightweight, easy-to-operate, built-in vacuum by RIDGID® reaches behind the second row, making cleanup simple. Stored and contained near the second row of the driver's side, the most powerful integrated vacuum in its class² offers easy access to all corners of the Pacifica. Stow 'n Vac includes debris-drawer removal, for simple disposal, as well as a longer accessory hose for extended reach.



A headache-free zone and quietest vehicle in its class?

The premium, ergonomically designed seats support contours of the body and are available heated and ventilated along with generous leg room. The all-new Active Noise Cancellation (ANC) technology provides a peaceful cabin experience, contributing to the quietest vehicle in its class? The refined interior displays leather and cloth seating options with distinct stitching detail, as well as the standard Rotary E-shift dial and open center console with storage. The available 12-way adjustable driver seat with four-way power lumbar support and memory settings, heated steering wheel and keyless entry with push-button start are part of the available comforts that make Pacifica built to appreciate the driver.



The most technologically advanced vehicle in its class.¹

Pacifica transforms passenger productivity, entertainment and safety technology with the future of applied science and automation, bringing home and office capabilities on the road. The available 8.4-inch Uconnect[®] touchscreen has the ability to display turn-by-turn navigation instructions in the 7-inch full-color Driver Information Display (DID). The available all-new rear-seat Uconnect Theater offers the most advanced entertainment systems in its class.⁶ And paramount to helping protect you and your family is over 100 standard and available safety and security features that automatically react in the blink of an eye.

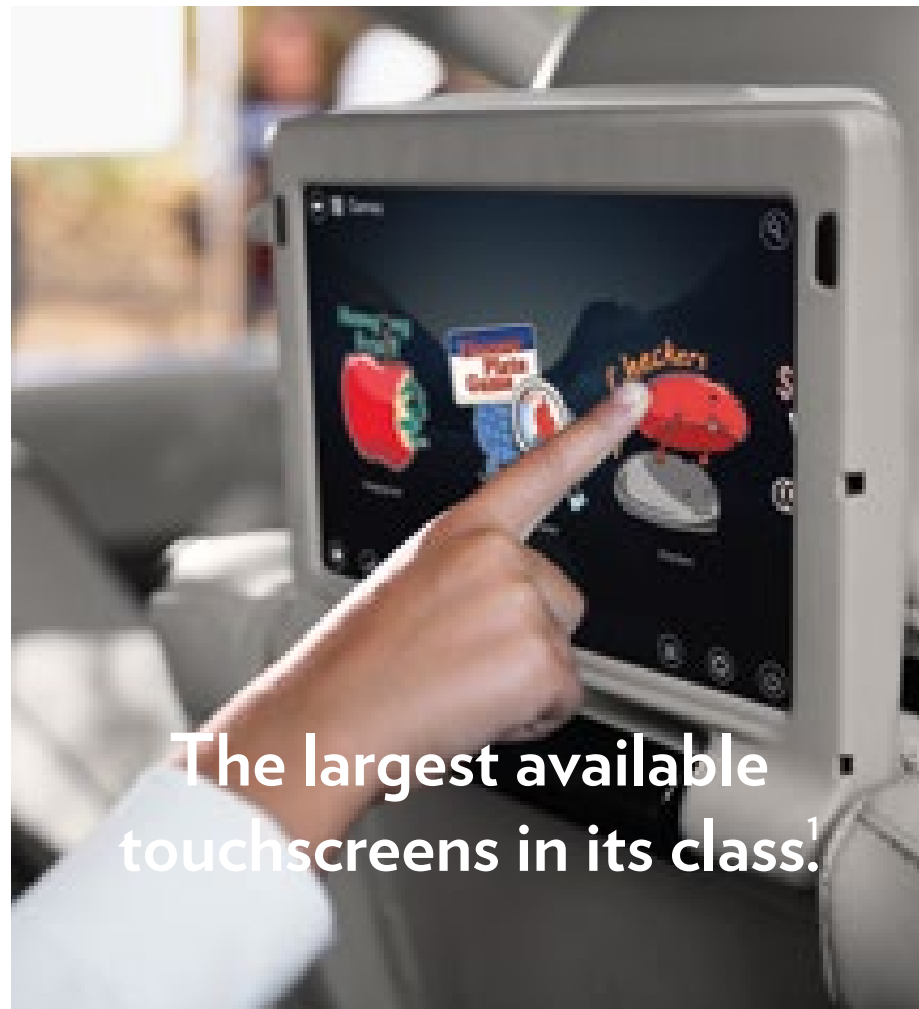
The most advanced entertainment system in its class.⁶

Uconnect[®] Touchscreen.

Remain focused on the road with your hands on the wheel, while you communicate, navigate and stay entertained. Personalize your information and connectivity with available features like Uconnect Access⁷ with WiFi,⁸ Siri[®] Eyes Free⁹ voice commands,¹⁰ Do Not Disturb to route incoming calls and texts, and the Drag and Drop menu bar to display your top Uconnect features and services.

Uconnect Theater.

The available Uconnect Theater allows second-row occupants to bring their lives along for the ride and simply connect with available USB and HDMI device connectivity. This technology integrates apps on two 10-inch HD touchscreens with the ability to stream media, keeping the crew entertained and in place. The dual backseat screens can display separate videos or games simultaneously.



The largest available touchscreens in its class.¹

Available Uconnect tools for demanding schedules.

Uconnect Access available WiFi Hotspot and apps are the remote tools to help you manage your busy lifestyle. From warming up your Pacifica on a cold morning with Remote Start to using Yelp[®] and Voice Texting¹¹ to arrange dinner plans, you'll have command of your demanding schedule.

You'll also enjoy your music apps like Pandora,[®] Slacker Radio,[®] Aha by HARMAN and iHeartRadio[®] using the Uconnect touchscreen.

Visit DriveUconnect.com for more information on all the latest tools and apps that make your life easier.



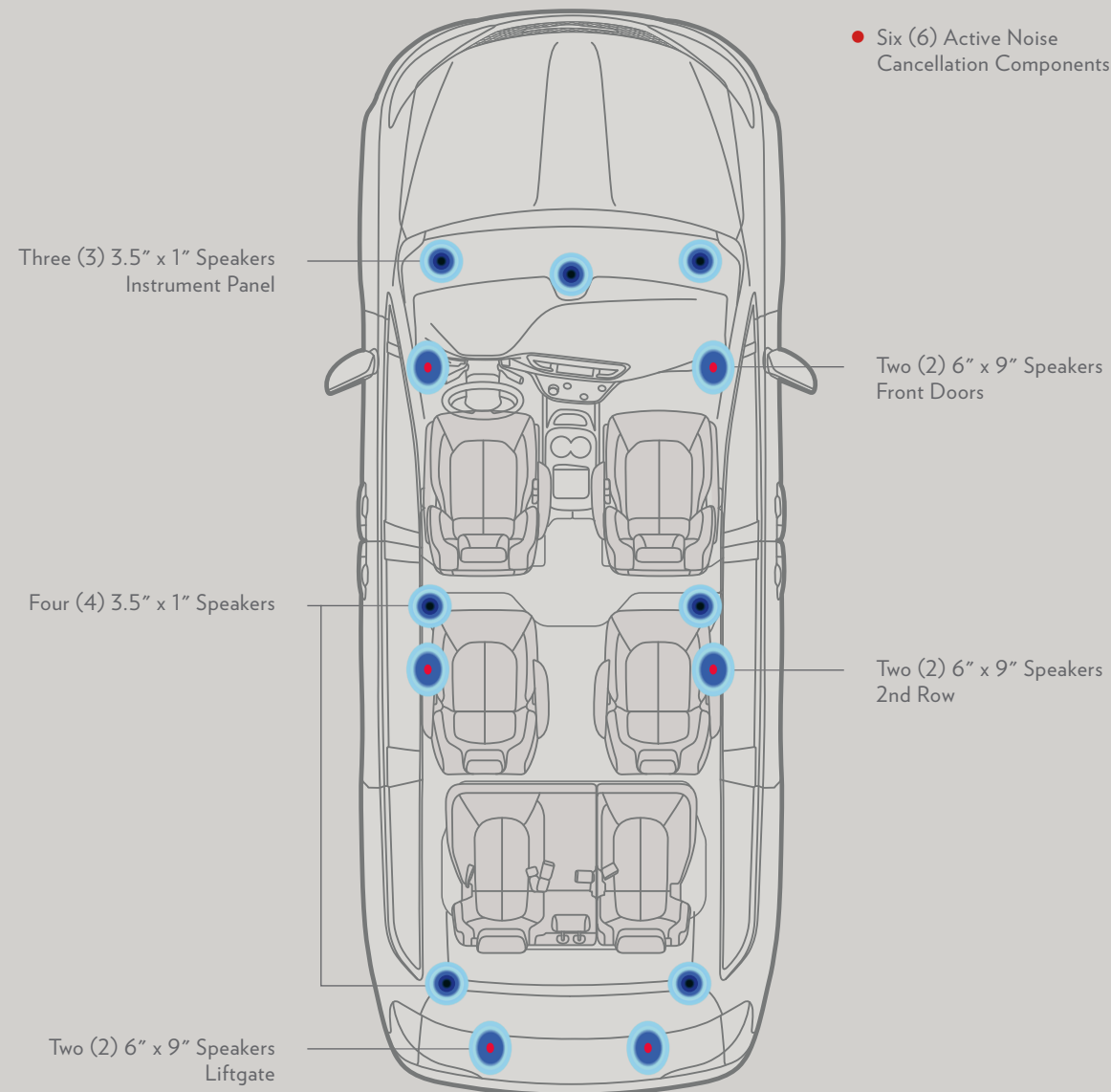
Keep curious minds in the backseat engaged as they follow their travels with the Are We There Yet? app or playing games like checkers, tic-tac-toe, backseat bingo or the license plate game.

Sound your on-board specialists will approve.

With the available Harman Kardon® premium audio system, every seat is perfectly tuned by sound specialists to immerse you in multichannel surround-sound with up to 20 speakers in 13 locations — providing a life-like audio experience with the powerful quality of GreenEdge™ technology.



A cabin designed for optimal acoustics.



SiriusXM® All Access¹² Package in your Pacifica and online.

From coast-to-coast road trips to your daily commute, you'll have over 150 channels to enjoy. Online streaming is also included as part of your one-year trial. So, whether on the go, at home or work, you have the ability to customize your music and listen to your favorite content on demand. SiriusXM Traffic¹² and SiriusXM Travel Link¹² are included on the 8.4-inch Uconnect® radio with a five-year trial.

Go to siriusxm.com/getallaccess for more information.



Take charge from any seat.

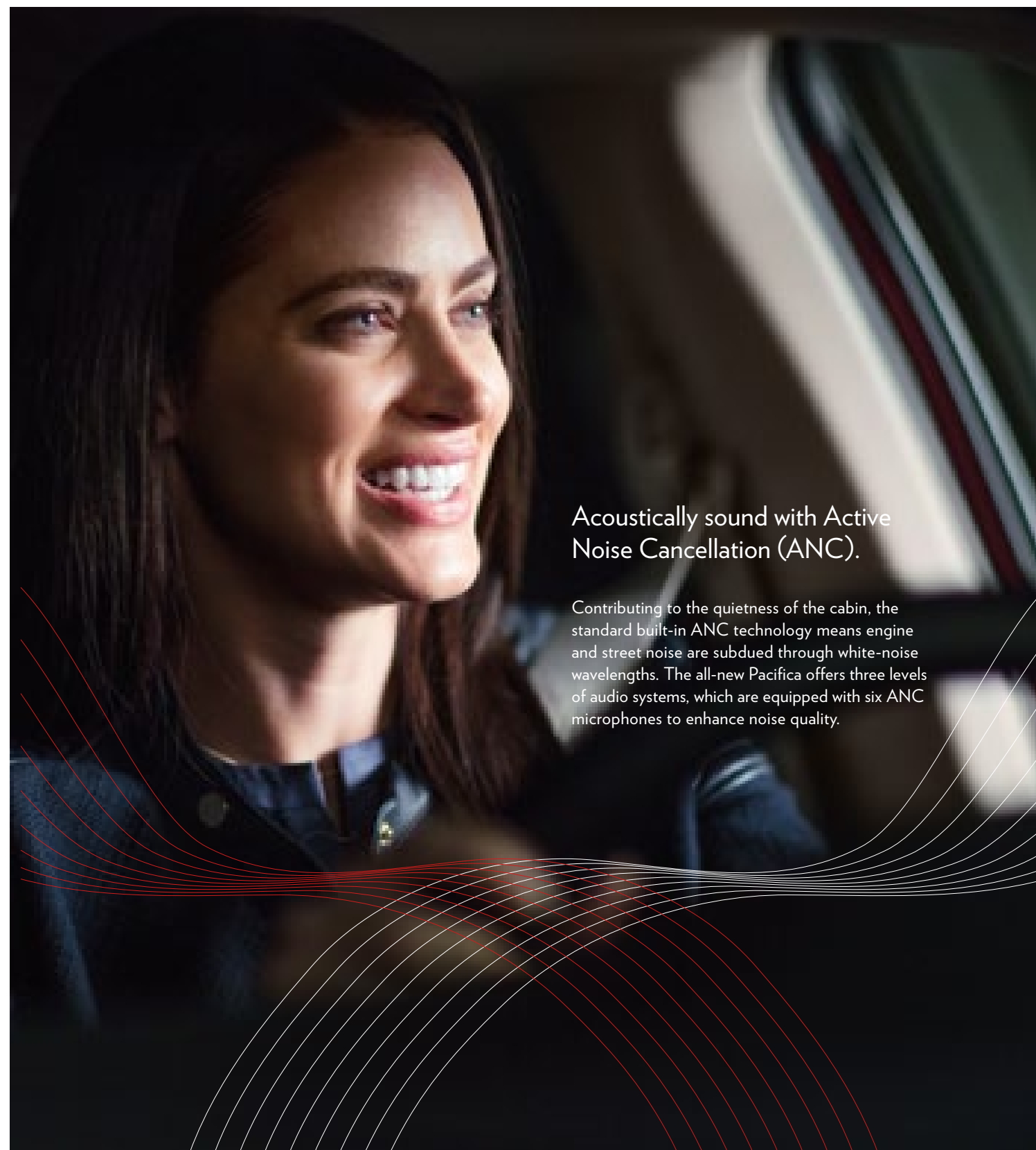
A USB port located in the first-row center stack can be used to play movies on the Uconnect Theater 10-inch HD touchscreens. Available additional ports in the first, second and third row also provide charging convenience.





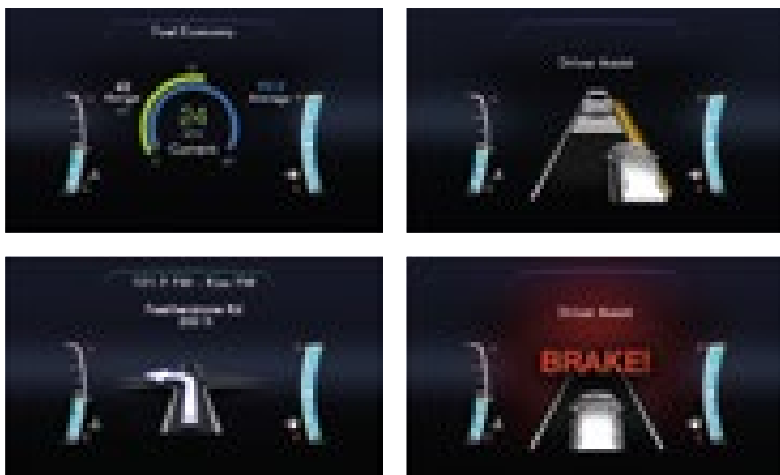
KeySense makes handing over the keys easier.

Put limits on speed, audio volume, SiriusXM® Channel¹² skip and more, as well as activate safety and security settings for additional drivers with the available KeySense feature. All can be assigned easily from the Uconnect® touchscreen to be utilized with a programmable key fob.



Acoustically sound with Active Noise Cancellation (ANC).

Contributing to the quietness of the cabin, the standard built-in ANC technology means engine and street noise are subdued through white-noise wavelengths. The all-new Pacifica offers three levels of audio systems, which are equipped with six ANC microphones to enhance noise quality.



Personalize the vehicle information you see.

An available 7-inch full-color Driver Information Display (DID) delivers configurable and incredibly crisp graphics that are seamlessly integrated with cluster gauges. The display allows for a wide range of driver assist settings, such as digital speedometer, fuel economy, available Adaptive Cruise Control with Stop and Go,¹³ LaneSense® Lane Departure Warning with Lane Keep Assist,¹⁴ and turn-by-turn navigation. A host of trip, audio and vehicle settings and information are also customizable to what you would like to view.



Date night.

The life of the modern family is about quality time — wanting the most for each other while making time for yourself. The gorgeous and sleek all-new Pacifica silhouette makes a good case for parents' night out.



Advanced evolution.

The upper body and frame of the all-new Pacifica's unibody structure are engineered as a single unit, bringing a superior foundation for achieving premium sedan-like agility. This architecture carries exceptionally solid strength, advanced structural applications, optimized proportions, and dynamic qualities like an enhanced grade of high-strength steels. The new door design also increases visibility around the front windows and pillars while sound-absorbing barriers in body cavities and the engine area reduce overall passenger-compartment noise, contributing to less driver distraction.

Your family's safety and security are what matter most.

Over 100 standard and available safety and security features include advanced driver assistance features which help you to park, brake in the event you need it, as well as alert you of vehicles in your blind spot.



The modern minivan driver shows off power moves with confident agility and precision.

Tuned and calibrated on rural roads, thoroughfares, highways, and at validation facilities, Pacifica is equipped to deliver the ride, feel and comfort of a premium vehicle with precision-tuned handling for more aggressive driving characteristics and precise, responsive steering. The Pacifica utilizes approximately 65-percent high-strength steel for maximizing stiffness and strength — for vehicle dynamics and crash performance — while optimizing weight efficiency.



100+
standard and available
safety & security
features



Available Surround-View Camera¹⁵ shown on the 8.4-inch Uconnect[®] touchscreen.



Available 360° Surround-View Camera¹⁵

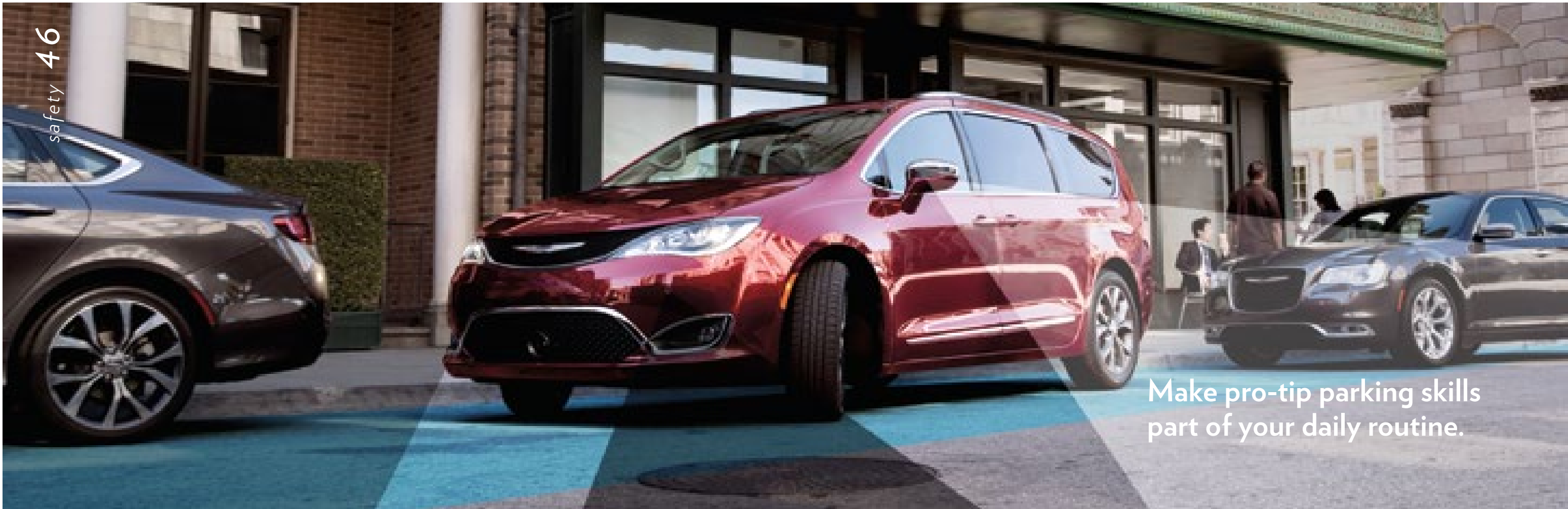
No guesswork required.

Whether parking, changing lanes, or simply backing out of your driveway, the available full-surround camera views¹⁵ — with visual and audio alerts — provide a new level of technology. Along with keeping an eye on blind spots¹⁶ and the road ahead, Pacifica offers features that automatically slow and stop the vehicle if it's too close to another,¹⁷ or help steer it back into your lane if you've unintentionally drifted.¹⁴



Available Blind Spot Monitoring (BSM)¹⁶

BSM¹⁶ notifies you when another vehicle is present with illuminated icons in the outside rearview mirrors and chimes when selected. The system alerts you of vehicles in the blind areas when passing or changing lanes. Rear Cross-Path Detection¹⁵ notifies of vehicles crossing your path when your Pacifica is in reverse.



Make pro-tip parking skills part of your daily routine.



With Parallel and Perpendicular Park Assist,¹⁵ your spot is open.

Helping to guide you into place confidently, the available ParkSense® Rear Park Assist with Stop capability¹⁵ and Parallel and Perpendicular Park Assist¹⁵ help you in your daily maneuvers.

Optional LaneSense® Lane Departure Warning (LDW) with Lane Keep Assist¹⁴ will automatically help guide you back into your lane if you've crossed the line without using your turn signal.

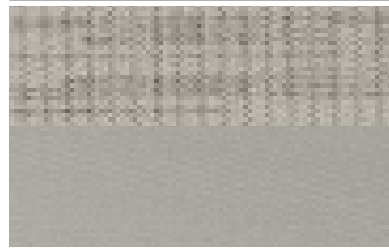
Available Adaptive Cruise Control (ACC) with Stop and Go¹⁵ identifies vehicles driving in front of yours and maintains a set distance between you, including Full Stop functionality if necessary.



Pacifica helps to keep you at a safe distance.

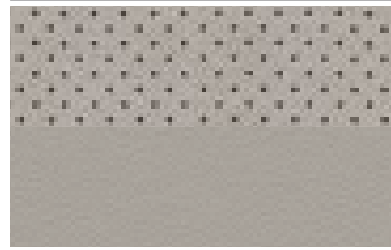
Preventing potential impact, available Forward Collision Warning (FCW) with Active Braking¹⁷ will slow, as well as stop in some instances, your Pacifica to help prevent an impact.

Touring Hybrid

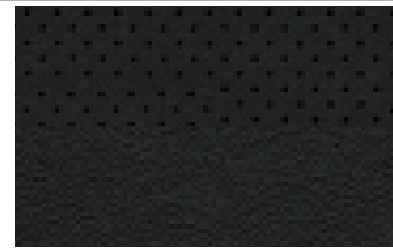


Alloy Cloth with Rain Forest Print

Limited Hybrid

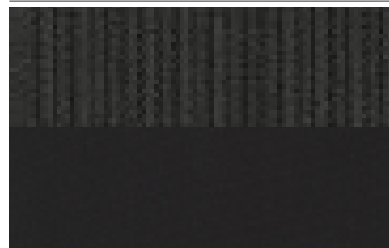


Alloy Nappa Leather with Axis II Perforations

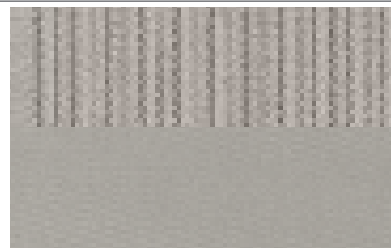


Black Nappa Leather with Axis II Perforations

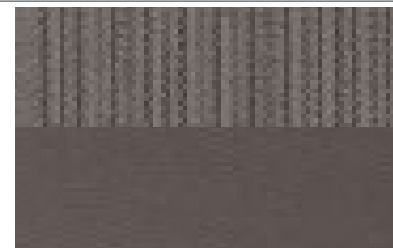
LX and Touring



Black Ravine Cloth

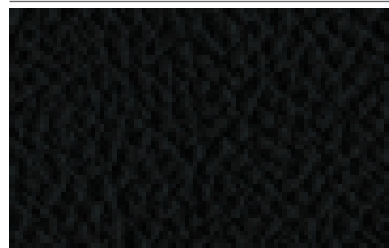


Alloy Ravine Cloth

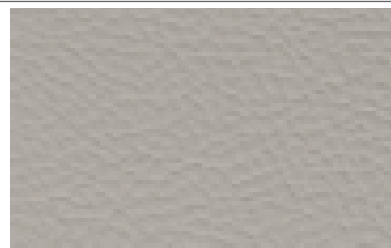


Toffee Ravine Cloth

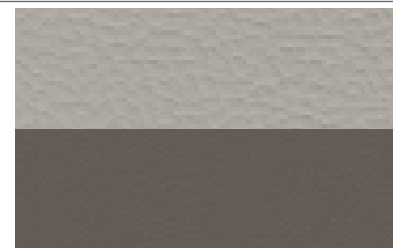
Touring-L



Black McKinley Leather

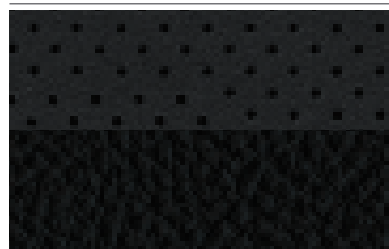


Alloy McKinley Leather



Alloy/Toffee Two-Tone McKinley Leather

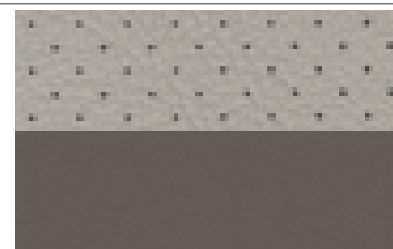
Touring-L Plus



Black McKinley Leather with Axis I Perforations

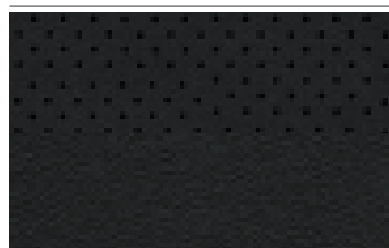


Alloy McKinley Leather with Axis I Perforations

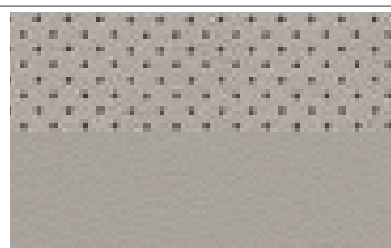


Alloy/Toffee Two-Tone McKinley Leather with Axis I Perforations

Limited



Black Nappa Leather with Axis II Perforations



Alloy Nappa Leather with Axis II Perforations



Deep Mocha Nappa Leather with Axis II Perforations

Interior colors.

The interior on the all-new Pacifica offers sophisticated material and trim combinations with soft surfaces and contemporary colors to convey an ambiance of living room comfort.

Exterior colors.

As many as nine exterior colors are offered (not including a Hybrid-specific hue), as well as an all-new finish. The paint is developed to accentuate the surfacing of Pacifica in terms of how the colors and finishes appear in bright sunlight, overcast or low-light conditions.

Velvet Red

Billet Silver

Bright White

Jazz Blue

Tusk White

Dark Cordovan

Silver Teal

Molten Silver

Brilliant Black

Granite Crystal

	LX	TOURING	TOURING-L	TOURING-L PLUS	LIMITED	TOURING HYBRID	LIMITED HYBRID
Powertrain							
Engine/Transaxle — 3.6L Pentastar® V6 VVT with nine-speed automatic	s	s	s	s	s		
3.6L Pentastar V6 Hybrid						s	s
Mechanical Features							
Alternator — 160-amp	s	s					
— 180-amp			s		s		
— 220-amp (included with Uconnect® Theater and Trailer Tow Group)				s	p		
Battery — 650-amp						s	s
— 730-amp	s	s	s	s	s		
Brakes — Four-wheel antilock with discs	s	s	s	s	s		
— Four-wheel antilock regenerative						s	s
Defroster — Rear	s	s	s	s	s	s	s
Engine Block Heater	o	o	o	o	o		
Fuel Tank — 16.5-gallon						s	s
— 19-gallon	s	s	s	s	s		
Suspension — Heavy-duty						s	s
— Normal-duty	s	s	s	s			
— Touring (included with 18-inch wheels)			p	p	s		
Tip Start	s	s	s	s	s	s	s
Exterior Features							
Door Handles — Body-color	s	s					
— Bright			s	s	s	s	s
Doors — Power sliding	f	s	s	s	s	s	s
Fog Lamps — Premium			s	s		s	s
— LED					s		
Glass — Sunscreen	s	s	s	s	s	s	s
Grille — Black	s	s					
— Black upper			s	s	s		
— Black with bright surround						s	s
Headlamps — Auto High-Beam Control (included with Advanced SafetyTec™ Group)				p	p		p
— Automatic		s	s	s	s	s	s
— Halogen	s	s					
— High Intensity Discharge (HID)					s		
— Quad-halogen			s	s		s	s
Liftgate — Power		o	s	s	s	o	s
Mirrors — Foldaway, power, heated	s	s					
— Body-color, foldaway, power, heated			s	s		s	
— Chrome, foldaway, power, heated with turn indicator							s
— Chrome, power folding, power, heated, auto-dimming driver-side, courtesy lamps, turn indicator, auto-adjust-in-Reverse					s		
Molding — Bodyside, bright			s	s	s		s
Roof Rack — Stow N Place®, Black	f	f	s				
— Stow N Place, bright (included with Ext. Appearance Group)				s	s		p
Sill Appliqué — Body-color	s	s	s	s	s	s	s
Tri-Pane Panoramic Sunroof					s		o
Tires — 235/65R17 BSW All-season	s	s	s	s		s	s
— 235/60R18 BSW All-season			o	o	s		o
— 245/50R20 BSW All-season					o		

s — standard | o — optional | p — package | f — fleet only

	LX	TOURING	TOURING-L	TOURING-L PLUS	LIMITED	TOURING HYBRID	LIMITED HYBRID
Exterior Features (continued)							
Tire Service Kit	s	s	s	s	s	s	s
Inflatable Spare Tire Kit — Includes air compressor and 17-inch inflatable spare tire	f	f	o				
Inflatable Spare Tire Kit — Includes air compressor, puncture sealant and inflatable 17-inch spare tire			f	o	o		
Wheels — 17-inch aluminum 10-spoke design	s	s					
— 17-inch aluminum 10-spoke turbine design		o	s				
— 17-inch aluminum five-spoke bladed design	o			s		s	s
— 18-inch aluminum 10-spoke Satin Silver design			o	o			
— 18-inch 10-spoke polished aluminum design					s		
— 18-inch aluminum (included with Exterior Appearance Group)							p
— 20-inch aluminum Y-spoke design					o		
Windshield Wipers — Front, rain-sensing (included with Advanced SafetyTec™ Group)				p	p		p
— Front/variable/intermittent	s	s	s	s	s	s	s
— Rear wiper/washer	s	s	s	s	s	s	s
Interior Features							
Air Conditioning — Three-zone automatic climate control			s	s	s	s	s
— Three-zone manual climate control	s	s					
Cruise Control	s	s	s	s	s	s	s
Adaptive Cruise Control with Stop and Go ¹⁵ (included with Advanced SafetyTec Group)				p	p		p
Door Locks — Power	s	s	s	s	s	s	s
Grocery Bag Hooks — Third-row seatbacks			s	s	s		s
Lighting — Cargo compartment	s	s	s	s	s	s	s
— Footwell courtesy					s		
— Front	s	s	s	s	s	s	s
— Glove box lamp			s	s	s		
— Liftgate, single floodlamp			s	s	s		
— Overhead ambient surround	s	s	s	s	s	s	s
— Rear reading courtesy	s	s	s	s	s		
— Right and left front-door searchlights					s		
Mirrors — Auto-dimming rearview				s	s		
— Rearview w/microphone	s	s	s			s	s
Power Outlets — 12-volt in instrument panel	s	s	s	s	s	s	s
— 115-volt (included with Uconnect® Theater Package and Uconnect Theater and Sound Group)				s	p		p
Remote Start			s	s	s		s
Shades — Second- and-third-row retractable			s	s	s		
Steering Column — Tilt/telescoping	s	s	s	s	s	s	s
Steering Wheel — Heated (included with Comfort Group)				s	s		p
— Mounted audio controls	s	s	s	s	s	s	s
— Luxury					s		s
Storage — Glove box, locking	s	s	s	s	s	s	s
— Floor tray	s	s	s	s	s	s	s
— Lower instrument-panel cubby	s	s	s		s	s	s
— Super console				s	s		
Stow 'n Vac — Integrated vacuum cleaner					s		

s — standard | o — optional | p — package | f — fleet only

	LX	TOURING	TOURING-L	TOURING-L PLUS	LIMITED	TOURING HYBRID	LIMITED HYBRID
Interior Features (continued)							
Trip Computer — Electronic Vehicle Information Center (EVIC) with display in instrument cluster, controls mounted on steering wheel	s	s	s	s	s	s	s
Universal Garage Door Opener			s	s	s		
Windows — Power front and second row, front one-touch down	s	s	s	s	s	s	s
— Power front and second row, one-touch down				s	s		
Seating							
Cloth Seating	s	s				s	
Leather-trimmed Seating			s				
Perforated Leather-trimmed Seating				s			
Premium Leather-trimmed Seating					s		s
Eight-way Power Driver and Front-passenger Seats with Driver Seat Memory					s		
Eight-way Power Driver Seat with Four-way Power Lumbar Support	s	s	s	s	s	s	s
Eight-way Power Front-passenger Seat (included with Comfort Group)				s	s		p
Ventilated Front Seats (included with Comfort Group)					s		p
Heated Front Seats			s	s	s		s
Heated Second-row Seats				s	s		
Stow 'n Go® Assist — Driver side	s	s	s	s	s		
— Passenger side				s	s		
Second-row Stow 'n Go Seating	s	s	s	s	s		
Third-row Stow 'n Go 60/40 Bench Seat	s	s	s	s	s	s	s
Third-row Power Folding Seat					s		
Seating for Eight	o	o	o	o			
Uconnect® Multimedia							
Uconnect 5.0 — 5-inch touchscreen, AM/FM, Integrated Voice Command ¹⁰ and Bluetooth®, Voice Text Reply ¹¹	s	s	s				
Uconnect 8.4 — 8.4-inch touchscreen, AM/FM, AUX/USB, Integrated Voice Command ¹⁰ with Bluetooth, Voice Text Reply, ¹¹ Uconnect Access ⁷ (6-month subscription), Siri® Eyes Free, ⁹ Do Not Disturb, Vehicle User Guide, Drag and Drop menu bar		o	o	s		s	
Uconnect 8.4 NAV — 8.4-inch touchscreen, AM/FM, AUX/USB, Integrated Voice Command ¹⁰ with Bluetooth, Voice Text Reply, ¹¹ Uconnect Access ⁷ (12-month subscription), Siri Eyes Free, ⁹ Do Not Disturb, Vehicle User Guide, Drag and Drop menu bar, HD radio, navigation, SiriusXM® Traffic ¹² and SiriusXM Travel Link ¹²	f	f	f	o	s	o	s
SiriusXM Satellite Radio ¹²		s	s	s	s	s	s
Speakers — 6	s	s	s			s	s
— 13 Alpine® speakers (included with Uconnect Theater Package and 13-Speaker Alpine Sound Group)			p	s	s		p
— 20 Harman Kardon® speakers (included with 20-Speaker Harman Kardon Sound Group and Uconnect Theater and Sound Group)				p	p		
Safety & Security							
Air bags ¹⁸ — Advanced multistage driver and front passenger, includes low-risk deployment	s	s	s	s	s	s	s
— Driver and front-passenger inflatable knee blocker	s	s	s	s	s	s	s
— Front seat-mounted side	s	s	s	s	s	s	s
— Side-curtain, outboard passengers all rows	s	s	s	s	s	s	s
Blind Spot Monitoring ¹⁶ — Included with SafetyTec™ Group and Advanced SafetyTec Group on Limited Hybrid	p	p	s	s	s	p	p
Child Seat Anchor System (LATCH)	s	s	s	s	s	s	s

s — standard | o — optional | p — package | f — fleet only

	LX	TOURING	TOURING-L	TOURING-L PLUS	LIMITED	TOURING HYBRID	LIMITED HYBRID
Safety & Security (continued)							
Electronic Parking Brake with Safe Hold	s	s	s	s	s	s	s
Electronic Stability Control (ESC) ¹⁹	s	s	s	s	s	s	s
Forward Collision Warning Plus ¹⁷ (included with Advanced SafetyTec™ Group)						p	p
KeySense	o	o	o	o	o	o	o
LaneSense® Lane Departure Warning with Lane Keep Assist ¹⁴ (included with Advanced SafetyTec Group)						p	p
Parallel and Perpendicular Park Assist ¹⁵ (included with Advanced SafetyTec Group)						p	p
ParkSense® Rear Park Assist with Stop ¹⁵ (included with SafetyTec Group)	p	p	s	s	s	p	s
ParkSense Front/Rear Park Assist with Stop ¹⁵ (included with Advanced SafetyTec Group)						p	p
ParkView® Rear Back-Up Camera ¹⁵	s	s	s	s	s	s	s
Rear Cross-Path Detection ¹⁵ (included with SafetyTec Group and Advanced SafetyTec Group on Limited Hybrid)	p	p	s	s	s	p	p
Remote Keyless Entry	s	s	s	s	s	s	s
Remote Proximity Entry — All doors (included with power sliding doors)	f	s	s	s	s	s	s
Security Alarm			s	s	s	s	s
Surround-View Camera ¹⁵ (included with Advanced SafetyTec Group)						p	p
Tire Pressure Monitoring System	s	s	s	s	s	s	s
Trailer Sway Control (included with Trailer Tow Group)						p	p
Uconnect® Voice Command ¹⁰	s	s	s	s	s	s	s
Packages/Equipment Groups							
Advanced SafetyTec Group — Includes Advanced Brake Assist, Forward Collision Warning Plus, ¹⁷ rain-sensing windshield wipers, Auto High-Beam Headlamp Control, Adaptive Cruise Control with Stop and Go, ¹⁵ LaneSense Lane Departure Warning with Lane Keep Assist, ¹⁴ Surround-View Camera, ¹⁵ ParkSense Front/Rear Park Assist with Stop, ¹⁵ Parallel and Perpendicular Park Assist ¹⁵				o	o		o
Comfort Group — Includes ventilated front seats, heated steering wheel and power eight-way passenger seat							o
Exterior Appearance Group — Includes bright roof rails and 18-inch wheels							o
Hands-Free Sliding Doors and Liftgate Group — Includes hands-free sliding doors and liftgate				o	s		
SafetyTec Group — Includes ParkSense Rear Park Assist with Stop, ¹⁵ Blind Spot Monitoring ¹⁶ and Rear Cross-Path Detection ¹⁵	o	o	s	s	s	o	
Trailer Tow Group — Includes trailer wiring harness, Trailer Sway Control, heavy-duty radiator and 220-amp alternator on Limited and Class II hitch receiver				o	o		
Uconnect Theater Package — Includes 220-amp alternator, 115v auxiliary power outlet, 13 Alpine® speakers, wireless headphones, video remote control, HDMI input, USB charge port in third row, two 10-inch seatback touchscreens, USB port, Blu-ray®/DVD player				s	o		o
Uconnect Theater and Sound Group — Includes 220-amp alternator, 115v auxiliary power outlet, 20 Harman Kardon® speakers, wireless headphones, video remote control, HDMI input, two 10-inch seatback touchscreens, USB port, 760-watt amplifier, Blu-ray/DVD player					o		
Seating for Eight and 20-inch Wheels Group — Deletes Tri-Pane Panoramic Sunroof					o		
13-Speaker Alpine Sound Group — Includes 13 Alpine speakers, third-row USB charge port, Uconnect 8.4			o				
20-Speaker Harman Kardon Sound Group — Includes 20 speakers and 760-watt amplifier				o			

s — standard | o — optional | p — package | f — fleet only

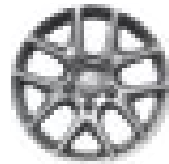
PACIFICA LX

Select standard equipment for LX

powertrain
3.6L Pentastar® V6 9-speed
Automatic Transmission

Active Noise Cancellation (ANC)
Active Grille Shutters
6 Speakers
Capless Fuel Fill
Adaptive Cruise Control¹³
Deep-tint Glass
Keyless Enter 'n Go™

ParkView® Rear Back-Up Camera¹⁵
Power Locks
Power Front and Second-row Windows
Stow 'n Go® Seating
Stow 'n Go Assist (driver side)
Three-zone Manual Climate Control
Tilt/Telescoping Steering Wheel
Uconnect® 5.0



standard wheel
17-inch Cast
Aluminum
Fully Painted
Tech Silver
(WFN)



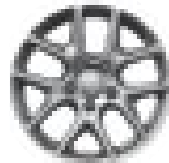
optional wheel
17-inch Cast
Aluminum
Fully Painted
Tech Silver
(WGZ)

PACIFICA TOURING

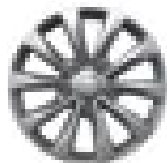
Select standard equipment over LX

powertrain
3.6L Pentastar V6 9-speed
Automatic Transmission

Additional Charge-only First-row USB Port
Automatic Headlamps
Interior Door Handle LED Lamps
Power Sliding Doors
Rear Reading Courtesy Lamps
Remote Proximity Entry on All Doors



standard wheel
17-inch Cast
Aluminum
Fully Painted
Tech Silver
(WFN)



optional wheel
17-inch Cast
Aluminum
Fully Painted
Tech Silver
(WFS)

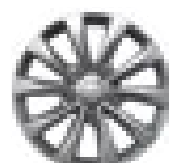
PACIFICA TOURING-L

Select standard equipment over Touring

powertrain
3.6L Pentastar V6 9-speed
Automatic Transmission

Blind Spot Monitoring¹⁶ and
Rear Cross-Path Detection¹⁵
Body-color Exterior Mirrors
Bright Bodyside Moldings
Bright Door Handles
Fog Lamps

Heated Front Seats
Leather-trimmed Seating
LED Taillamps
Power Liftgate
Three-zone Automatic Climate Control
ParkSense® Rear Park Assist with Stop¹⁵
Remote Start
Stow N Place® Black Side Roof Rails with
Integrated Crossbars



standard wheel
17-inch Cast
Aluminum
Fully Painted
Tech Silver
(WFS)



optional wheel
18-inch Cast
Aluminum
Fully Painted
Satin Silver
(WPR)

PACIFICA TOURING-L PLUS

Select standard equipment over Touring-L

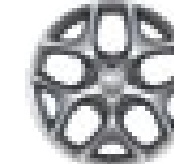
powertrain
3.6L Pentastar® V6 9-speed
Automatic Transmission

Heated Second-row Seats
Heated Steering Wheel
Perforated Leather-trimmed Seats

Stow N Place® Bright Side Roof Rails with
Integrated Crossbars
Uconnect® Theater
Uconnect 8.4-inch Radio
7-inch Driver Information Display (DID)
13 Speakers



standard wheel
17-inch Cast
Aluminum
Fully Painted
Tech Silver
(WGZ)



optional wheel
18-inch Cast
Aluminum
Fully Painted
Satin Silver
(WPR)

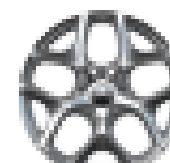
PACIFICA LIMITED

Select standard equipment over Touring-L Plus

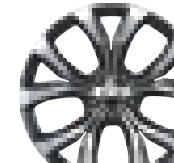
powertrain
3.6L Pentastar V6 9-speed
Automatic Transmission

Chrome Exterior Mirrors
Hands-free Sliding Doors and Liftgate
High Intensity Discharge (HID) Headlamps
Uconnect 8.4 NAV Radio
LED Fog Lamps

Premium Leather-trimmed Seats
Second-row USB Charge Ports
Auto-dimming Exterior Driver-side Mirror
Power Folding Third-row Seat
Stow 'n Vac
Tri-Pane Panoramic Sunroof
Ventilated Front Seats



standard wheel
18-inch Cast
Aluminum
Fully Polished
(WPD)



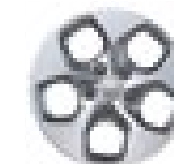
optional wheel
20-inch Cast
Aluminum
Polished face with
Tech Grey pockets
(WPA)

PACIFICA TOURING HYBRID

Select standard equipment for Touring Hybrid

Active Noise Cancellation (ANC)
Automatic Headlamps with Time-off Delay
Body-color, Power, Heated Mirrors
Bright Door Handles
Daytime Running Lamps (DRLs)
Deep-tint Glass
Fog Lamps
Leather-wrapped Steering Wheel
LED Taillamps

ParkView® Rear Back-Up Camera¹⁵
Power Locks
Power Sliding Doors
Power Windows
Three-zone Automatic Climate Control
Uconnect 8.4-inch Radio
6 Speakers
8-way Power Driver Seat



standard wheel
17-inch Cast
Aluminum
Fully Painted
Tech Silver
(WGZ)

PACIFICA LIMITED HYBRID

Select standard equipment over Touring Hybrid

Bright Bodyside Molding
Chrome Mirrors
Hands-free Liftgate and Sliding Doors
Heated Front Seats
Leather-trimmed Seating
ParkSense® Rear Park Assist with Stop¹⁵
Remote Start
Uconnect 8.4 NAV Radio



standard wheel
17-inch Cast
Aluminum
Fully Painted
Tech Silver
(WGZ)



optional wheel
18-inch Cast
Aluminum
Polished/Painted
(WPU)



Authentic Chrysler Accessories

The all-new 2017 Chrysler Pacifica embodies family utility and sleek, sporty style. A wide range of Authentic Mopar® Accessories, crafted specifically for the versatile ingenuity of the modern Pacifica, lets you take your family's active lifestyle even further. From Sport and Cargo Carriers to Premium Protection Parts, Mopar helps the crew and all its gear go the distance. Visit your local Chrysler dealership to see the full line of Authentic Accessories for the all-new Chrysler Pacifica.



Stow 'n Go® Cargo Bins.*
Lightweight bins fit seamlessly within the Stow 'n Go compartments, providing additional storage options when the second-row seats are not in the stowed position. Sold as a set of two.



All-Weather Mats.
These molded, custom-fit mats feature deep grooves to trap and hold water, snow and mud, protecting your vehicle's carpet from the elements. The mats, a must during inclement weather, are sold as a set of five. All-Weather Cargo Mat is also available.



Roof-Mount Ski and Snowboard Carrier.*
This convenient carrier holds up to six pairs of skis, four snowboards or a combination of the two. Carrier opens from either side and features corrosion-resistant lock covers. Carrier mounts to the standard Stow N Place® Roof Rack System or Roof Rack Kit.†



Hitch-Mount Bike Carrier.†
Hitch-mount carrier comes in two-bike and four-bike styles (both fit two-inch receivers). Each style folds down to allow your vehicle's liftgate to open without having to remove bikes. Carrier features carrying clamps and security cable.



Premium Cargo Carpet Mat.
This premium, substantial cargo mat helps protect your vehicle's carpeting. The mat is custom-contoured for a precise fit and is constructed with a superior-gripping backing to help keep it firmly in place. Mat also features a Chrysler metal badge logo and removes easily for cleaning. Set of five Premium Carpet Floor Mats is also available.



Hitch Receiver.†
Receiver increases towing capacity to up to 1,800 lb with weight-distributing equipment. The Hitch Ball, Ball Mount and Wiring Harness are sold separately.



The Chrysler Collection • Imported From Detroit®

Bring the Chrysler brand style and distinction to your lifestyle in and out of your vehicle with authentic professional, active, travel and home accessories and apparel for your favorite Chrysler enthusiast. Shop the complete collection to show you know what earned luxury is all about at collection.chrysler.com



**Chrysler Twill Cap
Item# 10FU7**
Not your traditional baseball cap with its attention to detail. Available in grey. Specifications: Made of brushed cotton twill. Embroidered Chrysler logo on front and embossed Chrysler logo on back buckle.



**Chrysler 14-oz Vacuum Tumbler
Item# 10ERR**
The ultimate laser-engraved titanium tumbler: a refreshing combination of advanced technology and elegant practicality. Available in titanium. Specifications: Dual-wall construction. Stainless steel vacuum insulation. Screw-on lid. Push-button locking closure. Laser-engraved Chrysler logo on one side.



**IFD Black T-shirt
Item# 102YT**
Do you have the know-how that runs generations deep? Prove it with this exceptionally soft, hard-working tee. Available in black. Specifications: Durable rib neckband. Imported From Detroit (IFD) logo on full front chest and back of neck in silver. Made in USA.



**Chrysler OGIO® Mercur Backpack
Item# 11DF3**
Specifications: Fleece-lined pocket for digital media/audio or valuables. Side mesh beverage pocket. Comfortable straps with elastic shock absorbers, sunglasses loop and elastic pocket. Fits most 17" laptops. Embroidered Chrysler wing design on front pocket. 13-1/2" W x 19" H x 8-1/2" D. Available in black.



**Chrysler Chrome Key Ring
Item# 1173J**
This Chrysler-branded chrome key ring lets you easily keep all your keys neatly organized. Specifications: Metal with vinyl strap and chrome trim. Chrome hinged ring with three detachable split rings. Laser-engraved Chrysler name is placed on strap. Available in navy.



**Chrysler Vintage Script T-shirt
Item# 10YUG**
Vintage style and simplicity will set this tee apart from the pack. Available in heathered navy. Specifications: Preshrunk 65% polyester/35% cotton sheer jersey. Chrysler vintage logo screen-printed on front.

WARRANTIES

Chrysler vehicles are covered by an FCA US LLC 3-Year or 36,000-Mile Basic Limited Warranty (excludes normal maintenance and wear items), as well as a 5-Year or 60,000-Mile Powertrain Limited Warranty that is fully transferable and includes Roadside Assistance services: Flat Tire, Lockout, Towing, Out of Gas/Fuel Delivery and Battery Jump Assistance. Ask your dealer for details and a copy of these limited warranties.

AUTOMOBILITY

The FCA US LLC Automobility Program provides aftermarket reimbursement incentives on adaptive vehicle upfit equipment in order to help provide safe and reliable vehicle modifications to enhance accessibility for all people. For more information, call (800) 255-9877 or visit chryslerautomobility.com

SIRIUSXM® SATELLITE RADIO¹²

SiriusXM Satellite Radio¹² delivers over 150 channels, including commercial-free music, sports, news, talk, entertainment, traffic and weather. Factory-installed SiriusXM Satellite Radio¹² includes a one-year subscription. For more information, go to siriusxm.com

MOPAR OWNER CONNECT

STAY CONNECTED. Your Chrysler vehicle ownership gives you the credentials to access extensive vehicle information, service and maintenance records, recall notifications and special offers through whatever device you prefer – computers, smartphones or tablets! Register your Chrysler brand vehicle at owners.chrysler.com or download the **Chrysler Vehicle Owners app** for free at either the Apple or Google Play stores.



Earn 3 points per \$1 on qualifying purchases made at FCA US LLC dealerships, 2 points per \$1 on qualifying travel purchases and 1 point per \$1 on qualifying purchases everywhere else with the new Chrysler MasterCard®. Points may be redeemed at your local dealership for cash off your new or used vehicle, accessories, parts or service – including your next oil change. Or choose from hundreds of other rewards, including travel, cash back to your account, merchandise or gift cards.²⁰ For more information or to apply, visit ChryslerCard.com

MOPAR® VEHICLE PROTECTION

Mopar Vehicle Protection has a vested interest in your satisfaction and owner experience with your new Chrysler brand vehicle. This is the only extended protection provider backed by the manufacturer, FCA US LLC. We stand behind every Mopar Vehicle Protection plan with certified, factory-trained technicians and the use of authentic Mopar® parts. Your plan is honored at over 2,600 dealerships within the United States, Canada, Puerto Rico and Mexico. Be sure to ask for a Mopar Vehicle Protection plan at your dealership, call (800) 442-2666 or visit moparvehicleprotection.com

JOIN IN



Join fellow enthusiasts and tell your story by posting comments, participating in discussions, and sharing your Chrysler vehicle photos and videos. Join our community on Facebook (facebook.com/Chrysler), follow us on Twitter (twitter.com/Chrysler), Google+ (plus.google.com/+Chrysler), Instagram (instagram.com/Chrysler), Pinterest (pinterest.com/Chrysler) and check us out on YouTube (youtube.com/TheChryslerChannel). Thank you for following.

GO MOBILE



Take an engaging, multimedia tour of your Pacifica on your mobile device. Log on to the Chrysler.com mobile site for a comprehensive, at-a-glance review of what you need to know about your vehicle. Experience interactive demonstrations of the entire lineup, gaining access to product information at your fingertips, wherever you go.

5 YEAR / 60,000 MILE
POWERTRAIN LIMITED WARRANTY

AUTOMOBILITY
PROGRAM
CHRYSLER | JEEP | DODGE | RAM

SIRIUSXM¹²
SATELLITE RADIO

MOPAR
OWNER
CONNECT

MOPAR
VEHICLE
PROTECTION

Uconnect

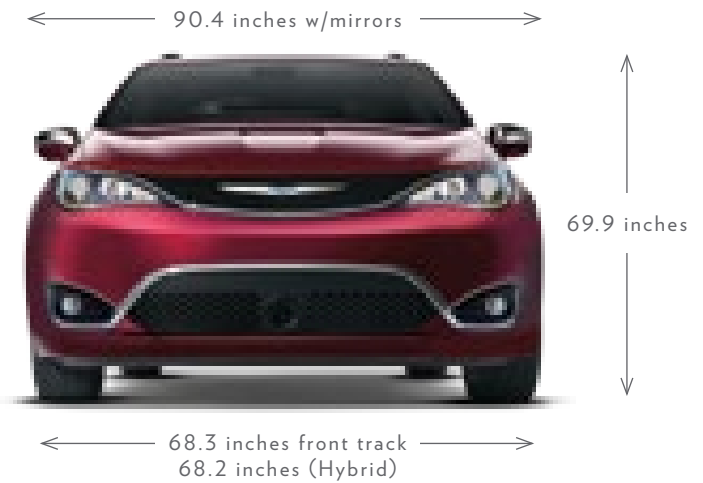
(1) Based on the latest available competitive information and the FCA US LLC Premium Minivan segment. (2) Based on Manufacturer's testing and the FCA US LLC Premium Minivan segment. (3) Based on latest available competitive information and Manufacturer's estimated 18 city / 28 hwy mpg with 3.6L engine and nine-speed transmission. (4) Be sure to follow all instructions in Owner's Manual for removal. (5) Based on the latest available competitive information and the FCA US LLC Premium Minivan segment. Excludes other FCA US LLC vehicles. (6) Based on available features and the latest available competitive information and the FCA US LLC Premium Minivan segment. (7) Uconnect Access is available only on equipped vehicles purchased within the contiguous United States plus Alaska. Services can only be used where cellular coverage is available, see coverage map for details. For a complete list of Uconnect Access services, please visit http://www.driveuconnect.com/features/uconnect_access/packages/. Vehicle must be registered for Uconnect Access and fulfill minimum subscription requirement. (8) WiFi subscription required. Vehicle must be registered with Uconnect Access and fulfill minimum subscription requirements. Vehicle must be properly equipped and in active and usable cellular range for WiFi usage. WiFi Hotspot does not enable direct communication between multiple in-vehicle devices. Factors affecting the performance of WiFi Hotspot include: cellular network, signal strength and quality, time of day, number of channels used by the service provider, type of connection, number of clients using WiFi Hotspot and client device. This feature is not intended for use by the driver while the vehicle is in motion. Always drive safely. (9) Siri Eyes Free requires an iPhone equipped with Siri. Certain features not available while the vehicle is in motion. iPhone must be within active cellular range. Customer's existing iPhone data rates apply to internet supported features. (10) Requires a mobile phone equipped with the Bluetooth® Hands-Free Profile. Visit UconnectPhone.com for system and device compatibility. (11) Voice Text Reply and Voice Texting features require a compatible mobile device enabled with Bluetooth® Message Access Profile (MAP). iPhone and some other smartphones do not currently support Bluetooth® MAP. Visit www.UconnectPhone.com for system and device compatibility. Ensure MAP is ON and incoming message notification is enabled. Vehicle must be registered for Uconnect® Access and you must fulfill minimum subscription requirements. Also requires the use of a compatible smartphone that supports text messaging and Bluetooth®. Check UconnectPhone.com for device compatibility. (12) SiriusXM subscriptions for audio and data services are sold by SiriusXM to follow your trial subscription. If you decide to continue listening after your trial, the subscription plan you choose will automatically renew thereafter and you will be charged according to your chosen payment method at then-current rates. Fees and taxes apply. To cancel, you must call SiriusXM at 1-866-635-2349. See the SiriusXM Customer Agreement for complete terms and more information at www.siriusxm.com. All fees and programming subject to change. Your equipment and features for SiriusXM services will vary depending upon the vehicle you select and may be limited in select markets. (13) This system is a driver convenience system, not a substitute for active driver involvement. The driver must remain aware of traffic conditions and be prepared to use the brakes to avoid collisions. (14) This system is a driver convenience system, not a substitute for active driver involvement. The driver must remain aware of traffic conditions and maintain control of the vehicle. (15) Always look before proceeding. An electronic drive aid is not a substitute for conscientious driving. Always be aware of your surroundings. (16) Always check visually for vehicles prior to changing lanes. (17) This system is not intended to avoid collisions on its own, nor can FCW detect every type of potential crash. The driver must remain aware of traffic conditions and be prepared to brake and steer to avoid potential collisions at all times. (18) The Advanced Front Air Bags in this vehicle are certified to the new U.S. Federal regulations for Advanced Air Bags. Children 12 years old and younger should always ride buckled up in a rear seat. Infants in rear-facing child restraints should never ride in the front seat of a vehicle with a passenger front air bag. All occupants should always wear their lap and shoulder belts properly. (19) No system, no matter how sophisticated, can repeal the laws of physics or overcome careless driving actions. Performance is limited by available traction, which snow, ice and other conditions can affect. When the ESC warning lamp flashes, the driver needs to use less throttle and adapt speed and driving behavior to prevailing road conditions. Always drive carefully, consistent with conditions. Always wear your seat belt. (20) Complete details, including restrictions, limitations and exclusions, will be available when you become a Cardmember. MasterCard is a registered trademark of MasterCard International Incorporated. This card is issued by First Bankcard, a division of First National Bank of Omaha, pursuant to a license by MasterCard International Incorporated.

©2016 FCA US LLC. All Rights Reserved. Chrysler, Jeep, Dodge, Ram, the Chrysler wing design, Automobility, Imported From Detroit, LaneSense, Mopar, the Mopar Owner Connect design, Mopar Vehicle Protection, Pacifica, ParkSense, ParkView, Pentastar, Stow 'n Go, Stow N Place and Uconnect are registered trademarks and Keyless Enter 'n Go, KeySense, SafetyTec and Stow 'n Vac are trademarks of FCA US LLC.

Aha is a trademark of Harman International. Alpine and the Alpine logo are registered trademarks of Alpine Electronics, Inc. All rights reserved. Bluetooth is a registered trademark of Bluetooth SIG, Inc. Blu-ray is a registered trademark of Blu-ray Disc Association, LLC. Facebook and logo are registered trademarks of Facebook, Inc. Harman Kardon and GreenEdge are registered trademarks of Harman International Industries, Inc. iHeartRadio is a registered trademark of Clear Channel. Instagram is a registered trademark of Instagram, Inc. iPhone and Siri are registered trademarks of Apple Inc. OGIO is a registered trademark of OGIO International. Pandora is a registered trademark of Pandora Media, Inc., all rights reserved. Pinterest is a registered trademark of Pinterest, Inc. RIDGID® is a registered trademark of RIDGID, Inc. The Twitter name, logo, Twitter T, Tweet and Twitter bird are service marks of Twitter, Inc. in the United States and other countries. Yelp and related marks are registered trademarks of Yelp. YouTube, the YouTube logo, Google Play and Google Plus are trademarks of Google Inc.

This brochure is a publication of FCA US LLC. All product illustrations and specifications are based upon current information at the time of publication approval. FCA US LLC reserves the right to make changes from time to time, without notice or obligation, in prices, specifications, colors and materials, and to change or discontinue models, which are considered necessary to the purpose of product improvement or for reasons of design and/or marketing.

74-383-2711



203.6 inches
121.6 inches



68.3 inches rear track
68.2 inches (Hybrid)



IMPORTED FROM DETROIT®

1-800-Chrysler
Chrysler.com

74-383-2711
Chrysler is a registered trademark of FCA US LLC.